

Pandemic Response Team

Tasks



- Set up the Pandemic Response Teams
- Have a plan in place to adopt this corporate framework and develop site-specific protocol

About:

The Pandemic Response Team (PRT) is a cross functional team lead by Site Manager in the following categories/examples:

Site Manager - Site manager who has overall responsibility for the site's pandemic preparedness & response plan, coordinating and aligning with regional/global EHS Leader (Environmental, Health and Safety Leader) and the COVID-19 Crisis Team.

Employee Access Control Lead - Works with the site to manage social distancing logistics in regards to arriving and departing employee "shifts, as well as visitors and contractors. Will further support the Virus Prevention & Protocol leader by providing site specific options regarding social distancing within the site, including potential mitigation measures to manage risk of employees required to work < 1 meter from others.

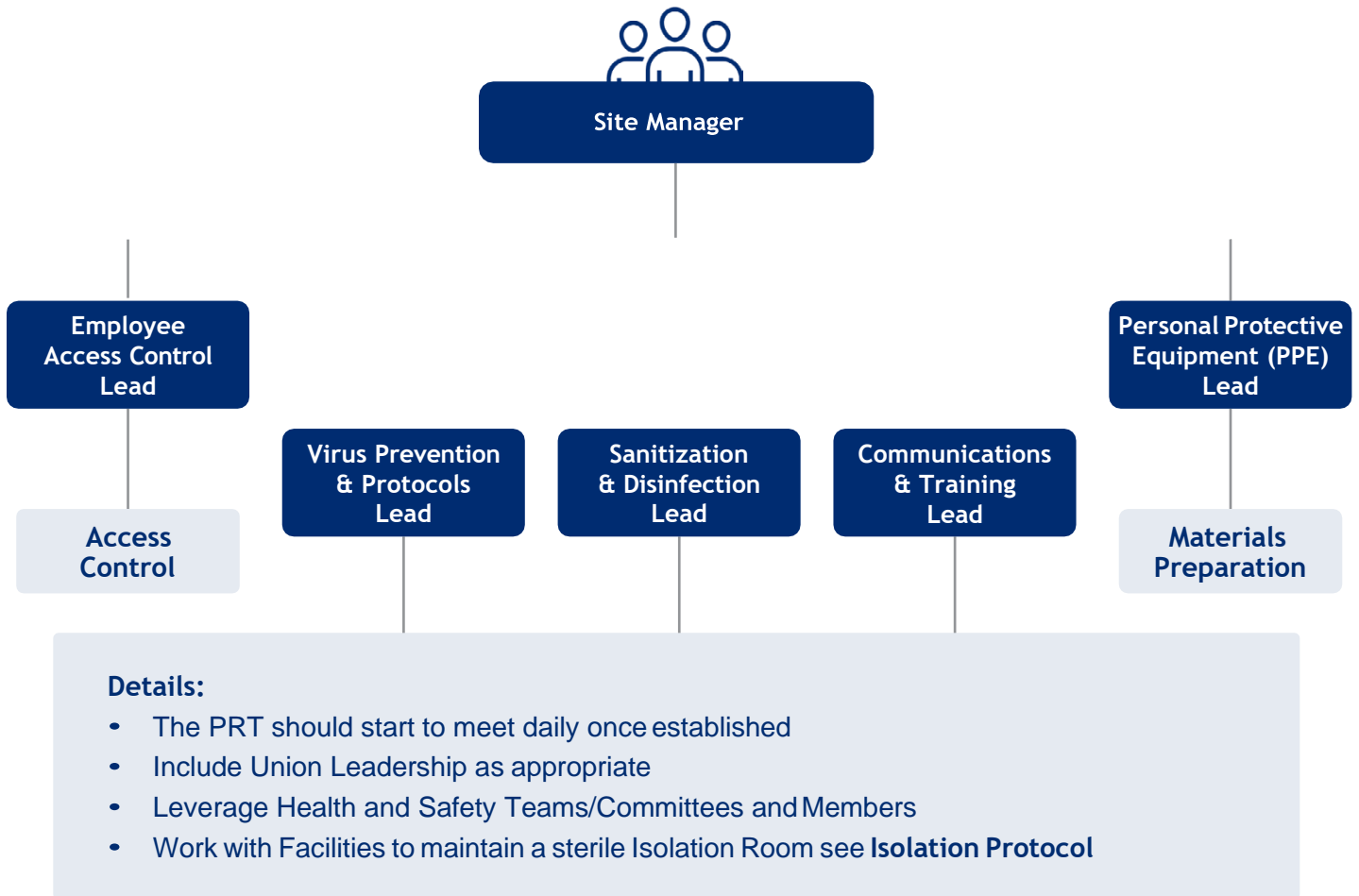
Virus Prevention & Protocols Lead - Works to develop protocols to ensure the wellness of all employees, and the overall pandemic preparedness and response plan, ensuring alignment with Global EHS and the COVID-19 Crisis Team.

Sanitization & Disinfection Lead - Works to manage daily and periodic disinfection logistics, including routine and deep cleaning, disinfection processes, in accord to the protocols set up by the Virus Prevention & Protocol leader. Drives process continual improvement and ensure 100% compliance of [YourCompanyName]'s disinfection protocol, and any approved regional or site variations.

Communication & Training Lead - Works to manage all pandemic related communications, in accord with regional and global Communications and HR. Manages the training function across the site related to pandemic preparedness and response, including both employee, management and pandemic response team training, in accord with [YourCompanyName]'s playbook and COVID-19 Policy and Guidelines directive.

PPE & Materials Lead - Works to secure all necessary supplies to implement and sustain the site pandemic preparedness & response plan, including direct procurement by the site, as well as coordination with [YourCompanyName] Procurement related to accessing centrally located supplies or leveraging supplies from other [YourCompanyName] facilities.

1. This content has been adapted from publicly available, original content in the [Safe Work Playbook by Lear Corporation](#) and generously shared online.
2. This is not legal advice
3. The author of this document made every effort to remove confidential/company identifying information before distribution. Please notify the author if any such information was missed so that updates can be made



1. This content has been adapted from publicly available, original content in the [Safe Work Playbook by Lear Corporation](#) and generously shared online.
2. This is not legal advice
3. The author of this document made every effort to remove confidential/company identifying information before distribution. Please notify the author if any such information was missed so that updates can be made